



Explore

Districts

FEBRUARY 2014



JOURNEY TO EXCELLENCE

Northeast-A4 Laurel Highlands (#527)
Pittsburgh, PA
2014-03-17

Current Year-to-Date: 900 of 2800
Last Year-to-Date: 1100 of 2700

Composite Score (2800 max)



Overall status



Fiscal Management

Fundraising

Endowment

Market Share

-8.84%

Membership Growth

Youth Retention

-8.84%

-8.58%

Cub Scout Advancement

Boy Scout Advancement

.98%

-2.44%

Cub Scout Camping

Boy Scout Camping

Community Service

Youth-Serving Executives

0.2 hrs

-3

Commissioner Service

Unit Visitations

11.24%

-5.33%

Voice of the Scout

Council Leadership

5.77%

0

District Leadership

Unit Leadership

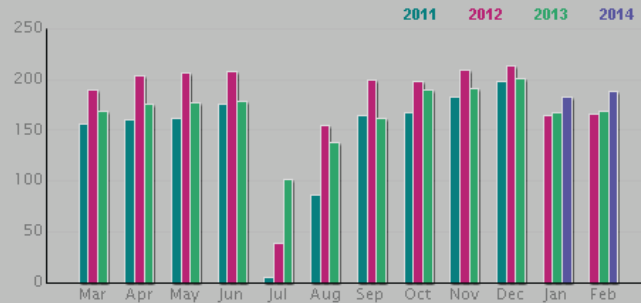
-2.0%

.52%

UNIT SERVICE: Commissioner Service G

Performance Standard

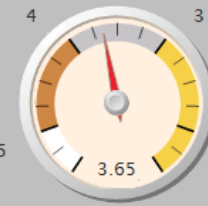
Total Unit Commissioners



11.24%

Determined Standard

Units to Unit Commissioner Ratio:



3.65

Council Score: GOLD = 100 points

Congratulations, this council has been awarded gold for its ability to maintain or improve the unit commissioner-to-unit ratio.

The calculation

The measurement for the determined standard is the number of total traditional units divided by the number of registered unit commissioners (Position Code 80). The performance standard compares the number of unit commissioners in the current year to the number for the same month last year. In 2011, the final score is determined from the higher level of achievement from either the determined standard or performance standard. In 2012 and beyond, the score is determined by a combination of the standards.

Level	Determined standard	or	Performance standard
Gold	CTU ratio of 1:3	or	Ratio of 1:4 and 5% increase in unit commissioners
Silver	CTU ratio of 1:4	or	Ratio of 1:5 and 5% increase in unit commissioners
Bronze	CTU ratio of 1:5	or	5% increase in unit commissioners

Additional detail

Every person registered in an "80" position code is counted, even if that person holds a multiple registration. Data feeds for this criterion occur on the 8th of each month.